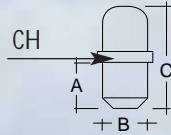


INGRASSATORI ZERCH-LUB E BAIONETTA ZERCH-LUB AND BAYONET GREASE NIPPLES

MATERIALE / MATERIAL

- I AISI INOX 303
INOX V2A
- AI AISI INOX 316
INOX V4A
- O OTTONE NICHEL.
NICKEL PL. BRASS
- AZ ACCIAIO ZINCATO
ZINC PLATED STEEL

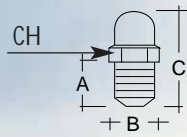


Art. 261



per fissaggio rapido
for quick assembly

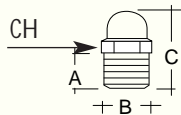
A	B	GAS	WW	SAE	DIN	C	CH	GRADI
5,5	Ø 6				3402	14		
6,2	Ø 8				3402	14		



Art. C4



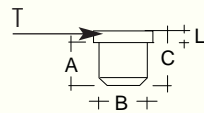
A	B	GAS	WW	SAE	DIN	C	CH	GRADI
5,5	M6x1		1/4		3402	15	7	



Art. 260



A	B	GAS	WW	SAE	DIN	C	CH	GRADI
5,5	M8x1				3402	15	11	
5,5	M8x1,25					15	11	
5,5	M10x1	1/8				15	11	
5,5	M10x1,5					15	11	
5,5		1/4				17	14	



Art. L

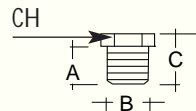


per fissaggio rapido
for quick assembly

a richiesta / on request

- I INOX 303
INOX V2A

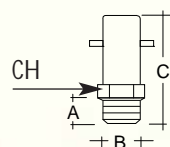
A	B	GAS	WW	SAE	DIN	C	L	T
5,3	Ø 6				3405	7,5	2	Ø 8
6	Ø 8					9	3	Ø 10
6,3	Ø 10					9,5	3	Ø 12



Art. L1



A	B	GAS	WW	SAE	DIN	C	CH	GRADI
6	M6x1				3405	10	9	
6	M8x1 M8x1,25					9,5	9	
6	M10x1 10x1,5	1/8				9,5	11	
7		1/4				11,5	14	



Art. B1



A	B	GAS	WW	SAE	NPT	C	CH	GRADI
6		1/8				25	11	
5,5		1/4				25	14	