

TESTINE PER INGRASSATORI A TESTA TONDA CONNECTORS FOR BUTTON HEAD GREASE NIPPLES

A&G Martinielli

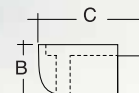
Testina a gancio in ottone per ingrassatori a testa tonda mm 22
Attacco M10x1



*Brass connector for button head grease nipples mm 22
Connection M10x1*

Art. 934

B	C
21 mm	32 mm



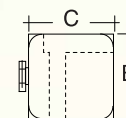
Testina in acciaio per cingoli per ingrassatori a testa tonda mm 22. Invertibile (90°-180°) in 2 sensi
Attacco M10x1



*Giant button head steel connector for grease nipples mm 22. Two-ways (90°-180°)
Connection M10x1*

Art. 937

B	C
30 mm	30 mm



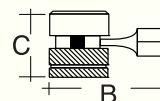
Testina in ottone regolabile tipo a bloccare per ingrassatori a testa tonda mm 22
Attacco M10x1



*Adjustable brass connector for button head grease nipples mm 22
Connection M10x1*

Art. 941

B	C
45 mm	28 mm



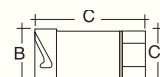
Testina in ottone per ingrassatori a baionetta tipo B1
Attacco M10x1



*Brass connector for bayonet grease nipples type B1
Connection M10x1*

Art. 936

B	C	CH
Ø 20 mm	48 mm	14



Puntalino ZERCH per ingrassatori a testa sferica
Attacco M10x1 - 9x1



*ZERCH nozzle for push type nipples
Connection M10x1 - 9x1*

Art. 944

B	C
Ø 12 mm	12 mm



Puntalino LUB per ingrassatori a testa svasata
Attacco M10x1 - 9x1



*LUB nozzle for flush type nipples
Connection M10x1 - 9x1*

Art. 946

B	C
Ø 12 mm	18 mm



Combinazione di puntalini per ingrassatori a testa sferica, svasata e Hydraulic
Tipo 260 - 261 - C4 - 270 - 273 - L1
Attacco M9x1



*Nozzles combination for flush /push and hydraulic nipples
Type 260-261-C4-270-273 - L1
Connection M9x1*

Art. 947

B	C
Ø 12 mm	16 mm



B	C
Ø 12 mm	16 mm