

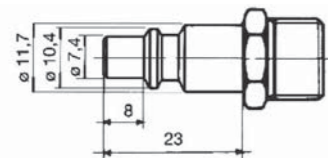
INNESTI RAPIDI SERIE ITALIA
ITALIAN TYPE QUICK CONNECTIONS

DATI TECNICI

Fluidi compatibili aria compressa
 Corpo ottone / acciaio
 Filettatura cilindrica ISO 228
 Temperatura di esercizio -20 °C +80 °C
 Pressione max. 10 bar

TECHNICAL SPECIFICATIONS

Fluid compressed air
 Body brass / steel
 Thread parallel ISO 228
 Operating temperature -20 °C +80 °C
 Max. pressure 10 bar



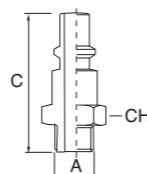
Ø Foro interno mm. 5
 I.D. hole 5 mm

I dati tecnici e le quote non sono vincolanti • Drawings and specifications are not binding


Codice 6370

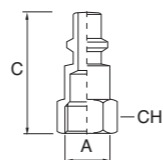
Innesto rapido maschio
 Male quick connection

A	C	⌘	Profilo
1/8	34,5	13	Italia
1/4	37	14	Italia
3/8	38	17	Italia


Codice 6371

Innesto rapido femmina
 Female quick connection

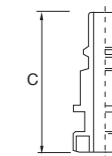
A	C	⌘	Profilo
1/4	37	15	Italia
3/8	39	19	Italia
1/2	41,5	25	Italia


Innesti rapidi serie Italia • Italian type quick connections

Codice 6380

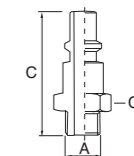
Innesto rapido a baionetta
 Quick connection with bayonet joint

C	Profilo
35	Italia


Codice 6460

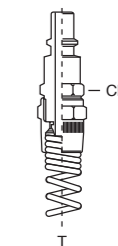
Innesto rapido maschio temprato
 Hardened quick connection

A	C	⌘	Profilo
1/4	37	14	Italia


Codice 8530

Innesto rapido per tubo spirale
 Quick connection for spiral hose

T	⌘	Profilo
6x4	12	Italia
8x5	13	Italia
8x6	13	Italia
10x6,5	13	Italia
10x8	13	Italia
12x8	15	Italia
12x10	15	Italia


Codice 6360

Innesto rapido per tubo gomma
 Quick connection for rubber hose

T	C	⌘	Profilo
6x10	55	13	Italia
6x14	56	13	Italia
8x12	56	13	Italia
8x13	56	13	Italia
8x14	56	13	Italia
8x15	56	13	Italia
8x17	56	13	Italia
10x15	60	13	Italia
10x17	60	13	Italia
10x19	60	13	Italia

