

RACCORDI E INNESTI RAPIDI SERIE GIGANTE BIG TYPE QUICK COUPLINGS

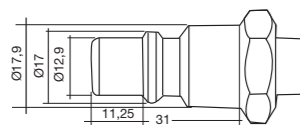
Serie gigante DN 9 • Big type DN 9

DATI TECNICI

Fluidi compatibili: aria compressa
 Corpo: acciaio e ottone
 Guarnizione: NBR
 Filettatura: cilindrica ISO 228
 Temperatura di esercizio: -20 °C +80 °C
 Pressione: max. 16 bar
 Passaggio aria a 6 bar: lt./min. 3500

TECHNICAL SPECIFICATIONS

Fluids: compressed air
 Body: steel and brass
 Seals: NBR
 Thread: parallel ISO 228
 Operating temperature: -20 °C +80 °C
 Max. pressure: 16 bar
 Flow rate at 6 bar: lt./min. 3500

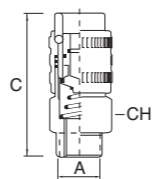


Ø foro interno mm. 9
 I.D. hole mm. 9

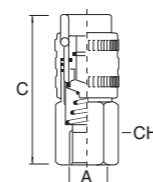
I dati tecnici e le quote non sono vincolanti • Drawings and specifications are not binding


Codice 6649
Rubinetto rapido gigante maschio
 Male high flow quick coupler

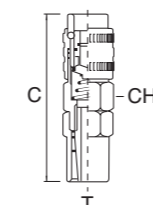
A	C	🔗	Profilo
3/8	80	27	Gigante
1/2	80	27	Gigante


Codice 6652
Rubinetto rapido gigante femmina
 Female high flow quick coupler

A	C	🔗	Profilo
3/8	70	27	Gigante
1/2	64	27	Gigante


Codice 6671
Rubinetto rapido gigante con portagomma
 High flow quick coupler for rubber hose

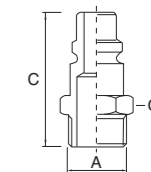
A	C	🔗	Profilo
10x19	113	27	Gigante
10x21	113	27	Gigante
13x21	116	27	Gigante
13x23	116	27	Gigante



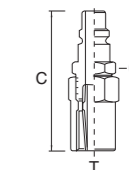
Raccordi e innesti rapidi serie gigante DN 9 • Big type quick couplings DN 9


Codice 6695
Innesto rapido gigante maschio
 High flow male quick connection

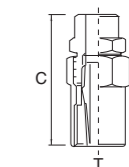
A	C	🔗	Profilo
3/8	48	19	Gigante
1/2	50	22	Gigante


Codice 6680
Innesto rapido gigante con portagomma
 High flow quick connection for rubber hose

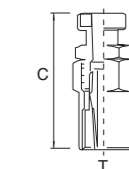
T	C	🔗	Profilo
10x19	80	22	Gigante
10x21	80	22	Gigante
13x21	82	22	Gigante
13x23	82	22	Gigante


Codice 6600
Attacco portagomma gigante maschio
 Male joint for rubber hose

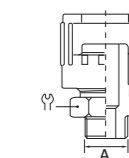
T	C	🔗	Profilo
3/8 10x19	59	22	Gigante
3/8 13x23	59	22	Gigante
1/2 10x19	63	22	Gigante
1/2 13x21	63	22	Gigante
1/2 13x23	63	22	Gigante


Codice 6640
Attacco a baionetta gigante con portagomma
 Bayonet joint for rubber hose

T	C	🔗	Profilo
10x19	62	22	Gigante
13x21	63	22	Gigante
13x23	63	22	Gigante


Codice 6610
Raccordo maschio gigante con dado fresato
 Male joint with milled nut

A	🔗	Profilo
3/8	22	Gigante
1/2	22	Gigante


Codice 101
Gommino di ricambio per attacco a baionetta art. 6640
 Seal for bayonet joint art. 6640