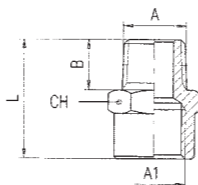



Codice 6906

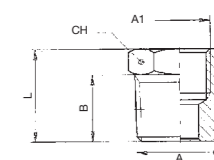
 Riduzione cilindrica
Parallel reducer

Cod.	A	A1	B	L	⊗
6906/1	1/8	1/8	6,5	20,5	12
6906/2	1/8	1/4	6	19	16
6906/3	1/8	3/8	6	20,5	20
6906/4	1/8	1/2	6	23	25
6906/6	1/4	1/4	8	21,5	16
6906/7	1/4	3/8	8	22,5	20
6906/8	1/4	1/2	8	25	25
6906/11	3/8	3/8	9	23,5	20
6906/12	3/8	1/2	9	26	25
6906/16	1/2	1/2	10,5	27,5	25
6906/20	3/4	3/4	11	31	32


Codice 6912/R

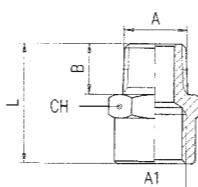
 Riduzione conica
Taper reducer

Cod.	A	A1	B	L	⊗
6912/R 5	1/4	1/8	10,5	15,5	14
6912/R 9	3/8	1/8	11	16	17
6912/R 10	3/8	1/4	11	16	17
6912/R 13	1/2	1/8	13,5	19	22
6912/R 14	1/2	1/4	13,5	19	22
6912/R 15	1/2	3/8	13,5	19	22
6912/R 18	3/4	3/8	16,5	23	27
6912/R 19	3/4	1/2	16,5	23	27
6912/R 21	1"	1/2	19	26,5	34
6912/R 22	1"	3/4	19	26,5	34


Codice 6912

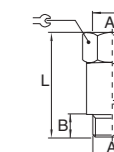
 Riduzione conica
Taper reducer

Cod.	A	A1	B	L	⊗
6912/1	1/8	1/8	7,5	17,5	12
6912/2	1/8	1/4	7,5	21,5	16
6912/3	1/8	3/8	7,5	22,5	20
6912/6	1/4	1/4	11	25	16
6912/7	1/4	3/8	11	26	20
6912/8	1/4	1/2	11	29	25
6912/11	3/8	3/8	11,5	26,5	20
6912/12	3/8	1/2	11,5	29,5	25
6912/16	1/2	1/2	13,5	31,5	25
6912/17	1/2	3/4	13,5	33,5	32
6912/20	3/4	3/4	16,5	36,5	32


Codice 6910

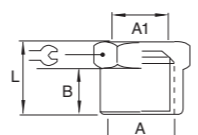
 Prolunga cilindrica
Parallel extension

A	A1	B	L	⊗
1/8	1/8	6	22	14
1/8	1/8	6	42	14
1/4	1/4	8	35	17
1/4	1/4	8	51	17


Codice 6906/R

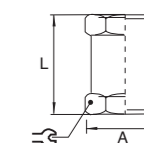
 Riduzione cilindrica
Parallel reducer

Cod.	A	A1	B	L	⊗
6906/R 5	1/4	1/8	8	13	17
6906/R 9	3/8	1/8	9	14	19
6906/R 10	3/8	1/4	9	14	19
6906/R 13	1/2	1/8	10	15,5	24
6906/R 14	1/2	1/4	10	15,5	24
6906/R 15	1/2	3/8	10	15,5	24
6906/R 18	3/4	3/8	11	18	30
6906/R 19	3/4	1/2	11	18	30
6906/R 21	1"	1/2	14	22,5	36
6906/R 22	1"	3/4	14	22,5	36


Codice 6902

 Manicotto
Sleeve

A	L	⊗
1/8	15	12
1/4	21	16
3/8	21,5	20
1/2	26,5	25
3/4	31,5	32
1"	35	38


Codice 6902/R

 Manicotto ridotto
Reducing sleeve

Cod.	A	A1	L	⊗
6902/R 1	1/8	1/4	17,5	16
6902/R 2	1/8	3/8	18,5	20
6902/R 3	1/4	3/8	20	20
6902/R 4	1/4	1/2	25	25
6902/R 5	3/8	1/2	25	25
6902/R 6	1/2	3/4	30	32
6902/R 7	3/4	1"	18,5	38

