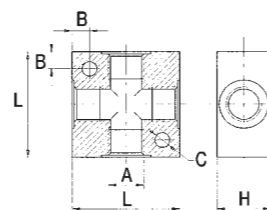



Codice 6899

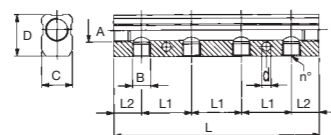
 Ripartitore a croce in alluminio
 Aluminium cross distributor

A	L	H	B	C
1/8	25	15	4,3	4,5
1/4	40	20	6,5	5,5
3/8	50	25	7,5	5,5
1/2	50	30	7,5	5,5


Codice 6900

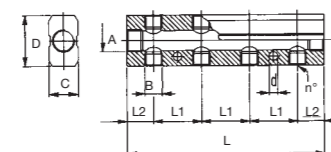
 Ripartitore in alluminio con uscite unilaterali
 Aluminium distribution manifold

A	B	N°	C	D	L1	L2	L	d
1/4	1/8	2	18	24	30	17,5	65	4,5
1/4	1/8	3	18	24	30	17,5	95	4,5
1/4	1/8	4	18	24	30	17,5	125	4,5
1/4	1/8	5	18	24	30	17,5	155	4,5
1/4	1/8	6	18	24	30	17,5	185	4,5
3/8	1/4	2	22	30	36	20	76	5,5
3/8	1/4	3	22	30	36	20	112	5,5
3/8	1/4	4	22	30	36	20	148	5,5
3/8	1/4	5	22	30	36	20	184	5,5
3/8	1/4	6	22	30	36	20	220	5,5
1/2	3/8	2	26	35	40	25	90	5,5
1/2	3/8	3	26	35	40	25	130	5,5
1/2	3/8	4	26	35	40	25	170	5,5
1/2	3/8	5	26	35	40	25	210	5,5
1/2	3/8	6	26	35	40	25	250	5,5


Codice 6898

 Ripartitore in alluminio con uscite bilaterali
 Aluminium double distribution manifold

A	B	N°	C	D	L1	L2	L	d
1/4	1/8	2	18	30	30	17,5	65	4,5
1/4	1/8	3	18	30	30	17,5	95	4,5
1/4	1/8	4	18	30	30	17,5	125	4,5
1/4	1/8	5	18	30	30	17,5	155	4,5
1/4	1/8	6	18	30	30	17,5	185	4,5
3/8	1/4	2	22	38	36	20	76	5,5
3/8	1/4	3	22	38	36	20	112	5,5
3/8	1/4	4	22	38	36	20	148	5,5
3/8	1/4	5	22	38	36	20	184	5,5
3/8	1/4	6	22	38	36	20	220	5,5
1/2	3/8	2	26	44	40	25	90	5,5
1/2	3/8	3	26	44	40	25	130	5,5
1/2	3/8	4	26	44	40	25	170	5,5
1/2	3/8	5	26	44	40	25	210	5,5
1/2	3/8	6	26	44	40	25	250	5,5


RACCORDI DI COLLEGAMENTO INOX 316 MICROFUSO
STAINLESS STEEL CONNECTION JOINTS
DATI TECNICI

Materiale: inox 316 microfuso
 Temperatura: min.-max. -20 °C +200 °C
 Applicazione: circuiti pneumatici ed idraulici in ambienti alimentari e in presenza di sostanze aggressive
 Pressioni: PN 10

TECHNICAL SPECIFICATION

Material: stainless steel
 Temperature: min.-max. -20 °C +200 °C
 Application: pneumatic and hydraulic circuits for use in food and aggressive environments
 Pressure: PN 10

I dati tecnici e le quote non sono vincolanti • Drawings and specifications are not binding


Codice 8100

 Niplo conico inox 316
 Taper stainless steel nipple

Cod.	F
8100/1	1/8
8100/4	1/4
8100/7	3/8
8100/9	1/2
8100/11	3/4
8100/13	1"
8100/15	1-1/4"
8100/17	1-1/2"
8100/20	2"


Codice 8110

 Niplo conico ridotto inox 316
 Taper stainless steel reducing nipple

Cod.	F	A
8110/2	1/8	1/4
8110/5	1/4	3/8
8110/6	1/4	1/2
8110/8	3/8	1/2
8110/10	1/2	3/4
8110/12	3/4	1"
8110/16	1-1/4"	1"
8110/18	1-1/2"	1"
8110/19	2"	1"