

**RACCORDI DI COLLEGAMENTO INOX 316L**  
**STAINLESS STEEL CONNECTION JOINTS**
**DATI TECNICI**

Materiale	inox 316L alimentare
Temperatura	min.-max. -20 °C +200 °C
Pressione min.	-0,99 bar
Pressione max.	120 bar
Fluidi compatibili	aria compressa, acqua potabile e fluidi alimentari
Filettatura	gas conica conforme ISO 7.1

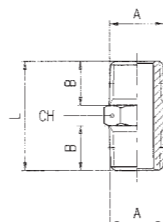
**TECHNICAL SPECIFICATION**

Material	stainless steel
Temperature	min.-max -20 °C +200 °C
Min. pressure	-0,99 bar
Max. pressure	120 bar
Fluids	compressed air, water and foodstuffs
Threads	taper BSP ISO 7.1

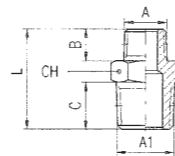
I dati tecnici e le quote non sono vincolanti • Drawings and specifications are not binding


**Codice 8300** Niplo conico inox 316  
Taper stainless steel nipple

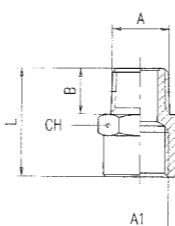
Cod.	A	B	L	CH
8300/1	1/8	7,5	19,5	11
8300/4	1/4	11	27	14
8300/7	3/8	11,5	28	17
8300/9	1/2	14	33,5	22
8300/11	3/4	16,5	40	27


**Codice 8300/R** Niplo conico ridotto inox 316  
Taper stainless steel reducing nipple

Cod.	A	A1	B	C	L	CH
8300/R 2	1/8	1/4	7,5	11	23,5	14
8300/R 3	1/8	3/8	7,5	11,5	24	17
8300/R 5	1/4	3/8	11	11,5	27,5	17
8300/R 6	1/4	1/2	11	14	30,5	22
8300/R 8	3/8	1/2	11,5	14	31	22
8300/R 10	1/2	3/4	14	16,5	37,5	27

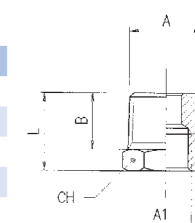

**Codice 8302** Riduzione conica inox 316  
Stainless steel reducer

Cod.	A	A1	B	C	CH
8302/2	1/8	1/4	7,5	22	17
8302/7	1/4	3/8	11	27	22
8302/8	1/4	1/2	11	30	24
8302/12	3/8	1/2	11,5	30,5	24
8302/17	1/2	3/4	14	35	32

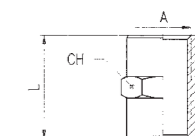

**Raccordi di collegamento inox 316L • Stainless steel connection joints**

**Codice 8302/R** Riduzione conica inox 316  
Stainless steel reducer

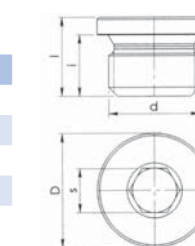
Cod.	A	A1	B	L	CH
8302R/5	1/4	1/8	11	16	14
8302R/9	3/8	1/8	11,5	16,5	17
8302R/10	3/8	1/4	11,5	16,5	17
8302R/14	1/2	1/4	14	19,5	22
8302R/15	1/2	3/8	14	19,5	22
8302R/19	3/4	1/2	16,5	23,5	27


**Codice 8305** Manicotto inox 316  
Stainless steel sleeve

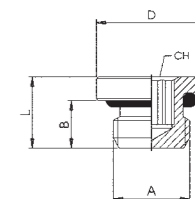
A	L	CH
1/8	15	14
1/4	22	17
3/8	24	22
1/2	30	27


**Codice 8308** Tappo cilindrico DIN 908 inox 316  
Parallel stainless steel plug DIN 908

d	i	D	s	l
1/8	8	14	5	11
1/4	12	18	6	15
3/8	12	22	8	15
1/2	14	26	10	18


**Codice 8307** Tappo a brugola maschio inox 316 con O-ring in FKM alimentare  
Pressione massima 15 bar  
Stainless steel male plug with hexagon and FKM O-ring  
Pressure max. 15 bar

A	B	L	CH
1/8	6	8,5	5
1/4	8	11	6
3/8	9	12,5	8
1/2	10	13,5	10


**Codice 8309** Tappo maschio conico DIN 906 inox 316  
Stainless steel male plug taper DIN 906

A	B	H	CH
1/8	7,5	5	5
1/4	10	7	6
3/8	11	7	8
1/2	13	8	10

