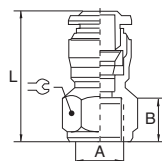


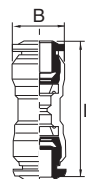
RACCORDI AUTOMATICI • PUSH-IN FITTINGS

Codice 6716 Raccordo diritto femmina
Straight female adaptor

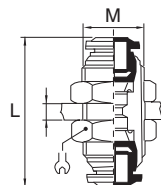
TUBO	A	B	L	⊗
4	M5	5,5	21	11
4	1/8	8,5	24	13
6	1/8	8,5	26	13
8	1/8	8,5	27	15
6	1/4	11	29,5	16
8	1/4	11	29,5	17
10	1/4	11	32	18
10	3/8	12	33,5	19
12	3/8	12	36	21


Codice 6725 Raccordo diritto intermedio
Straight connector

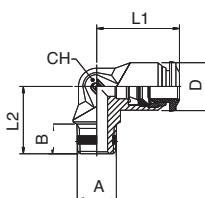
TUBO	L	B	
4	30,5	10,5	
5	33	11,5	
6	34	12,5	
6	4	32	12,5
8	36	14,5	
8	6	35	14,5
10	42	17,5	
10	8	40,5	17,5
12	47	20,5	
12	10	45,5	20,5
14	49	21,5	


Codice 6728 Raccordo intermedio di attraversamento
Bulkhead connector

TUBO	M	L	⊗
4	M12x1	31,5	17
5	M14x1	33	17
6	M14x1	35	17
8	M16x1	37	19
10	M20x1	43	24
12	M22x1	48	26

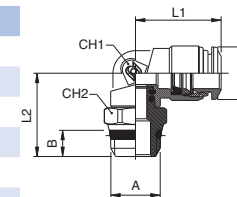

Codice 6729 Raccordo a L maschio conico
Elbow male adaptor (taper)

TUBO	A	B	L1	L2	⊗
4	1/8	7,5	17	15,5	9
6	1/8	7,5	21	17,5	11
8	1/8	7,5	22,5	19	13
6	1/4	11	21	21,5	11
8	1/4	11	22,5	21,5	13
10	1/4	11	26,5	24,5	16
10	3/8	11,5	26,5	24	16
12	3/8	11,5	30,5	28	19

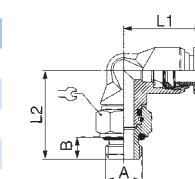

RACCORDI AUTOMATICI • PUSH-IN FITTINGS

Codice 6730 Raccordo a L orientabile maschio conico
Orienting elbow male adaptor (taper)

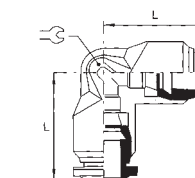
TUBO	A	B	L1	L2	⊗
4	1/8	5,5	18	19,5	13
6	1/8	5,5	21	21,5	13
8	1/8	5,5	22,5	24	13
6	1/4	7	21	23	15
8	1/4	7	22,5	24	15
10	1/4	7	26,5	26,5	16
8	3/8	7,5	22,5	24,5	17
10	3/8	7,5	26,5	24,5	17
12	3/8	7,5	31,3	26,5	20


Codice 6721 Raccordo a L orientabile maschio cilindrico
Orienting elbow male adaptor (parallel)

TUBO	A	B	L1	L2	⊗
4	M5	3,5	18	17,5	8
6	M5	3,5	21	20	11
4	1/8	5,5	18	18	13
5	1/8	5,5	20	20	13
6	1/8	5,5	21	20	13
8	1/8	5,5	22,5	22,5	13
6	1/4	7	21	21,5	16
8	1/4	7	22,5	23	16
10	1/4	7	26,5	25,5	16
8	3/8	8	22,5	25	20
10	3/8	8	26,5	25	20
12	3/8	8	31,5	27	20
12	1/2	9,5	31,5	28,5	25
14	1/2	9,5	31,5	29	25


Codice 6731 Raccordo a L intermedio
Elbow connector

TUBO	L	⊗
4	17	9
5	20	11
6	21	11
8	22,5	13
10	26,5	16
12	30,5	19
14	32,5	19


Codice 6741 Raccordo a T intermedio
Tee connector

TUBO	L1	L2	⊗
4	34	17	9
5	40	20	11
6	42	21	11
8	45	22,5	13
10	53	26,5	16
12	61	30,5	19
14	65,5	32,5	19

