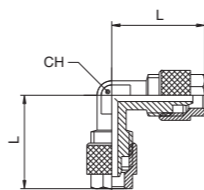


RACCORDI A CALZAMENTO • PUSH-ON FITTINGS



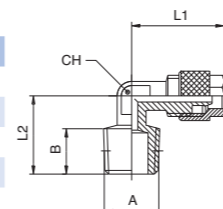
**Codice 6703** Raccordo a L intermedio  
Elbow connector

TUBO	L	🔑
4/2,7	20	8
5/3	20,6	8
6/4	20,6	8
8/6	21,9	9
10/8	25,5	11
12/10	27	13
15/12,5	33,5	16



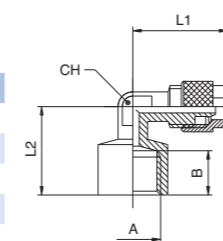
**Codice 6704** Raccordo a L maschio conico  
Elbow male adaptor (taper)

TUBO	A	B	L1	L2	🔑
4/2,7	1/8	7,5	19,5	15	8
5/3	1/8	7,5	19,5	15	8
6/4	1/8	7,5	19,5	15	8
8/6	1/8	7,5	19,9	16,5	9
6/4	1/4	11	20,6	19	8
8/6	1/4	11	21,9	19	9
10/8	1/4	11	24	22	11
10/8	3/8	12,5	25,5	22,5	11
12/10	3/8	12,5	27	22,5	13
10/8	1/2	14	28	28	16
12/10	1/2	14	30	28	16
15/12,5	1/2	14	31,5	28	16



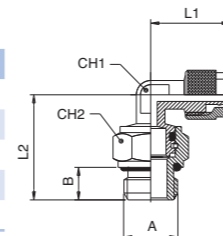
**Codice 6704/F** Raccordo a L femmina  
Elbow female adaptor

TUBO	A	B	L1	L2	🔑
6/4	1/8	8,5	20,6	18	8
8/6	1/8	8,5	21,9	19	9
6/4	1/4	10,5	21	21	9
8/6	1/4	10,5	23,4	21	9
10/8	1/4	10,5	25,5	22,5	11



**Codice 6704/G** Raccordo a L girevole maschio cilindrico  
Orienting elbow male adaptor (parallel)

TUBO	A	B	L1	L2	🔑
6/4	1/8	6	20,6	22	13
8/6	1/8	6	21,6	21,6	13
6/4	1/4	8	20,6	26	16
8/6	1/4	8	23,1	26,5	16
10/8	1/4	8	24	27,5	16

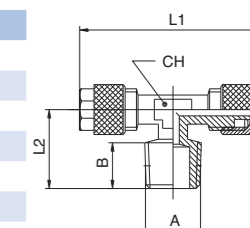


RACCORDI A CALZAMENTO • PUSH-ON FITTINGS



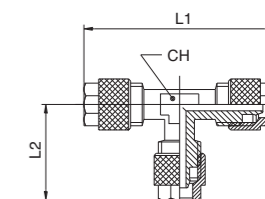
**Codice 6705** Raccordo a T maschio conico  
Tee male adaptor (taper)

TUBO	A	B	L1	L2	🔑
4/2,7	1/8	7,5	37	15,5	8
5/3	1/8	7,5	39	15,5	8
6/4	1/8	7,5	39	15,5	8
8/6	1/8	7,5	39,8	16,5	9
6/4	1/4	11	41,2	19	8
8/6	1/4	11	43,8	20,5	9
10/8	1/4	11	48	22	11
10/8	3/8	11,5	51	22	11
12/10	3/8	11,5	54	22,5	14
15/12,5	1/2	14	63	28	16



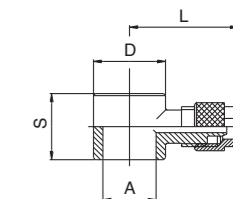
**Codice 6707** Raccordo a T intermedio  
Tee connector

TUBO	L1	L2	🔑
4/2,7	40	20,5	8
5/3	41,2	20,6	8
6/4	41,2	20,6	8
8/6	43,8	21,9	9
10/8	51	25,5	11
12/10	54	28	13
15/12,5	63	32,5	16



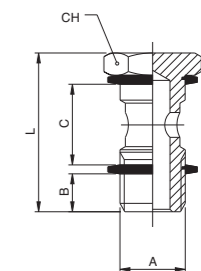
**Codice 6709** Raccordo orientabile singolo  
Single banjo body

TUBO	A	D	S
6/4	1/8	14	15
8/6	1/8	14	15
6/4	1/4	18	17
8/6	1/4	18	17
10/8	1/4	18	17



**Codice 6711/C** Vite cava singola  
Banjo single stem

A	B	L	🔑
1/8	6	28	14
1/4	8	32	17



**Codice 6713/R** Ranella in alluminio  
Aluminium washer

MISURA	H
1/8	1,5
1/4	1,5

