

# VALVOLE A SFERA BALL VALVES

### DATI TECNICI

Materiale	ottone nichelato
Fluidi compatibili	aria, acqua e fluidi compatibili con i materiali costruttivi
Guarnizioni sfera	PTFE
Guarnizione per asta	O-ring NBR 70
Filettature	cilindrica ISO 228
Temperatura	0 °C - 80 °C
Direzione del flusso	bidirezionale

### TECHNICAL SPECIFICATION

Materials	nickel plated brass
Fluids	compressed air, water and fluids compatible with construction materials
Seal for ball valve	PTFE
Steam ring	NBR 70
Threads	parallel ISO 228
Temperature	0 °C - 80 °C
Flow direction	bidirectional

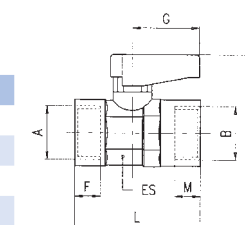
I dati tecnici e le quote non sono vincolanti • Drawings and specifications are not binding



Codice  
**7040**

Valvola a sfera femmina serie super-mini  
Super-mini ball valve F-F

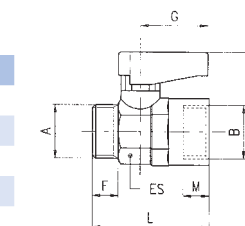
A	L	G	H	BAR
1/8	35	19	21	20
1/4	37	19	21	20
3/8	42	19	22	20
1/2	49	26	30,5	20



Codice  
**7050**

Valvola a sfera maschio-femmina serie super-mini  
Super-mini ball valve M-F

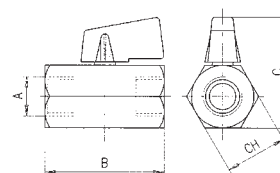
A	L	G	H	BAR
1/8	34	19	21	20
1/4	35	19	21	20
3/8	39	19	22	20
1/2	45	26	30,5	20



Codice  
**7080**

Valvola a sfera femmina serie mini  
Mini ball valve F-F

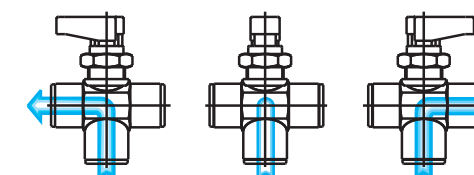
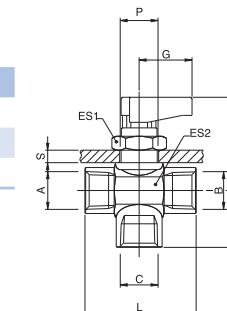
A	B	C	Ø	BAR
1/8	39	38	21	10
1/4	40	38	21	10
3/8	42	38	21	10
1/2	48	42	25	10



Codice  
**7065**

Valvola a sfera super-mini a tre vie a L  
Super-mini ball valve 3 ways

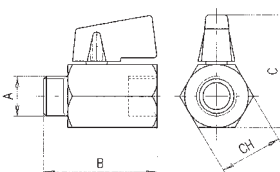
A	L	G	H1	H2	BAR
1/8	35	19	33,5	15,5	20
1/4	37	19	33,5	17,5	20
3/8	42	19	35	19,5	20



Codice  
**7081**

Valvola a sfera maschio-femmina serie mini  
Mini ball valve M-F

A	B	C	Ø	BAR
1/8	39	38	21	10
1/4	40	38	21	10
3/8	42	38	21	10
1/2	48	42	25	10



Codice  
**7066**

Valvola a sfera super-mini a tre vie a T  
Super-mini ball valve 3 ways

A	L	G	H1	H2	BAR
1/8	35	19	33,5	15,5	20
1/4	37	19	33,5	17,5	20
3/8	42	19	35	19,5	20

